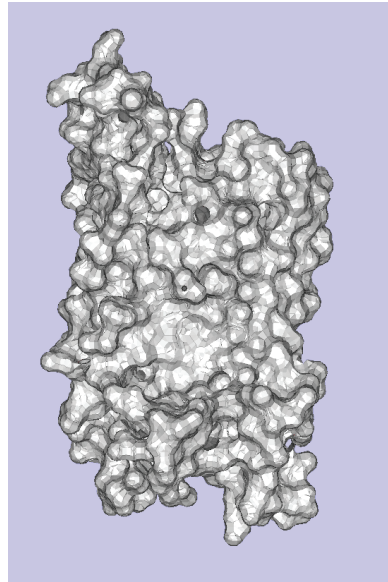
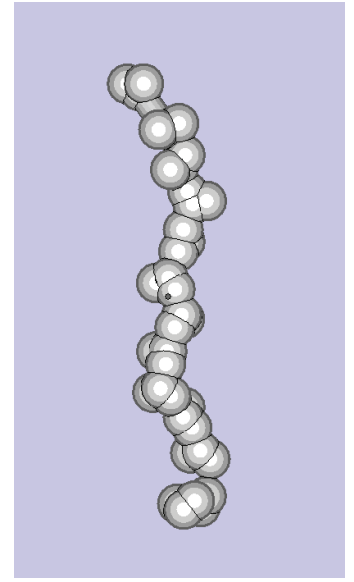


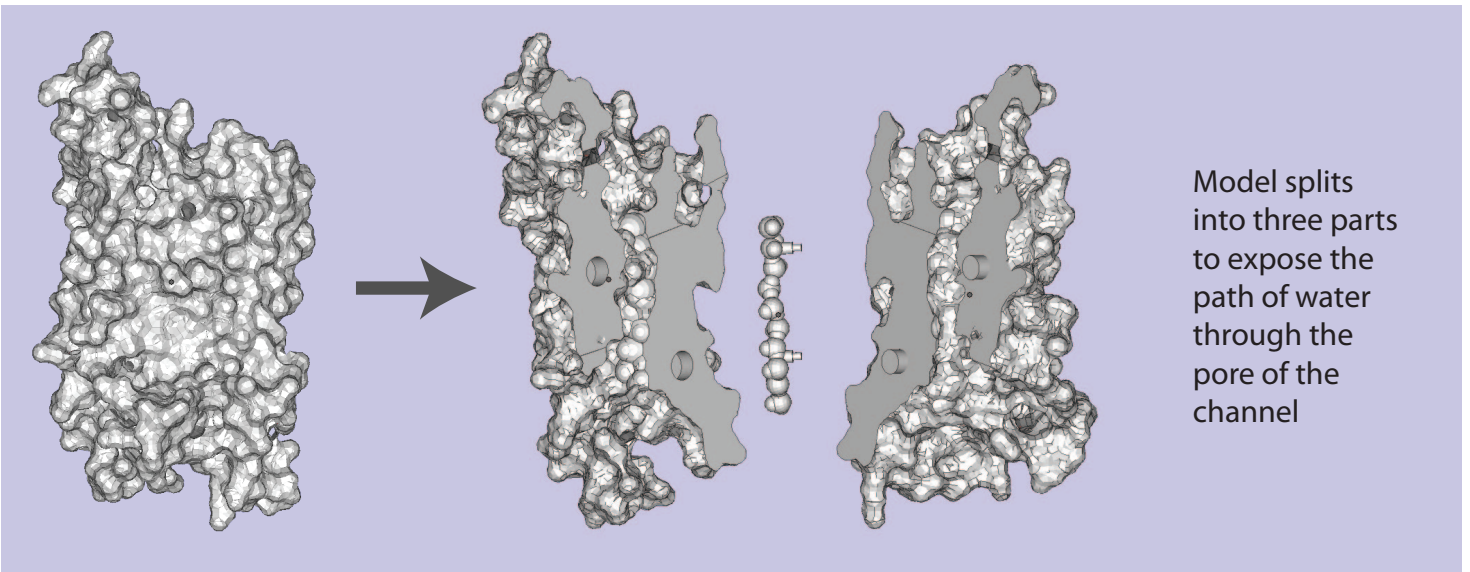
aquaporin_thickBackbone.stl



aquaporin_surface.stl



aquaporin_waterPath.stl

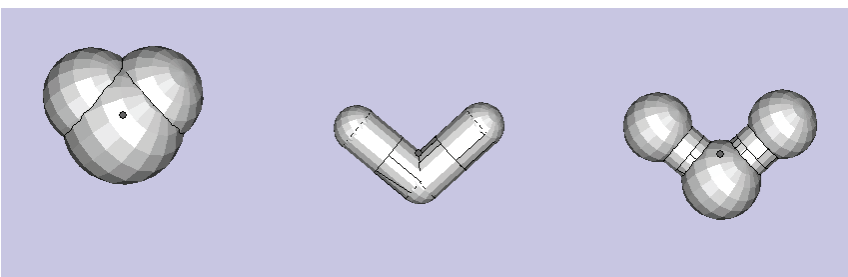


Model splits into three parts to expose the path of water through the pore of the channel

aquaporin_surface_split_part1.stl

aquaporin_surface_split_part2.stl

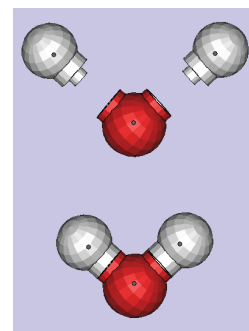
aquaporin_surface_split_part3.stl



water_spacefill.stl

water_wireframe.stl

water_ballStick.stl



water_hydrogen.stl
water_oxygen.stl

Build hydrogen and oxygen atoms separately and glue together